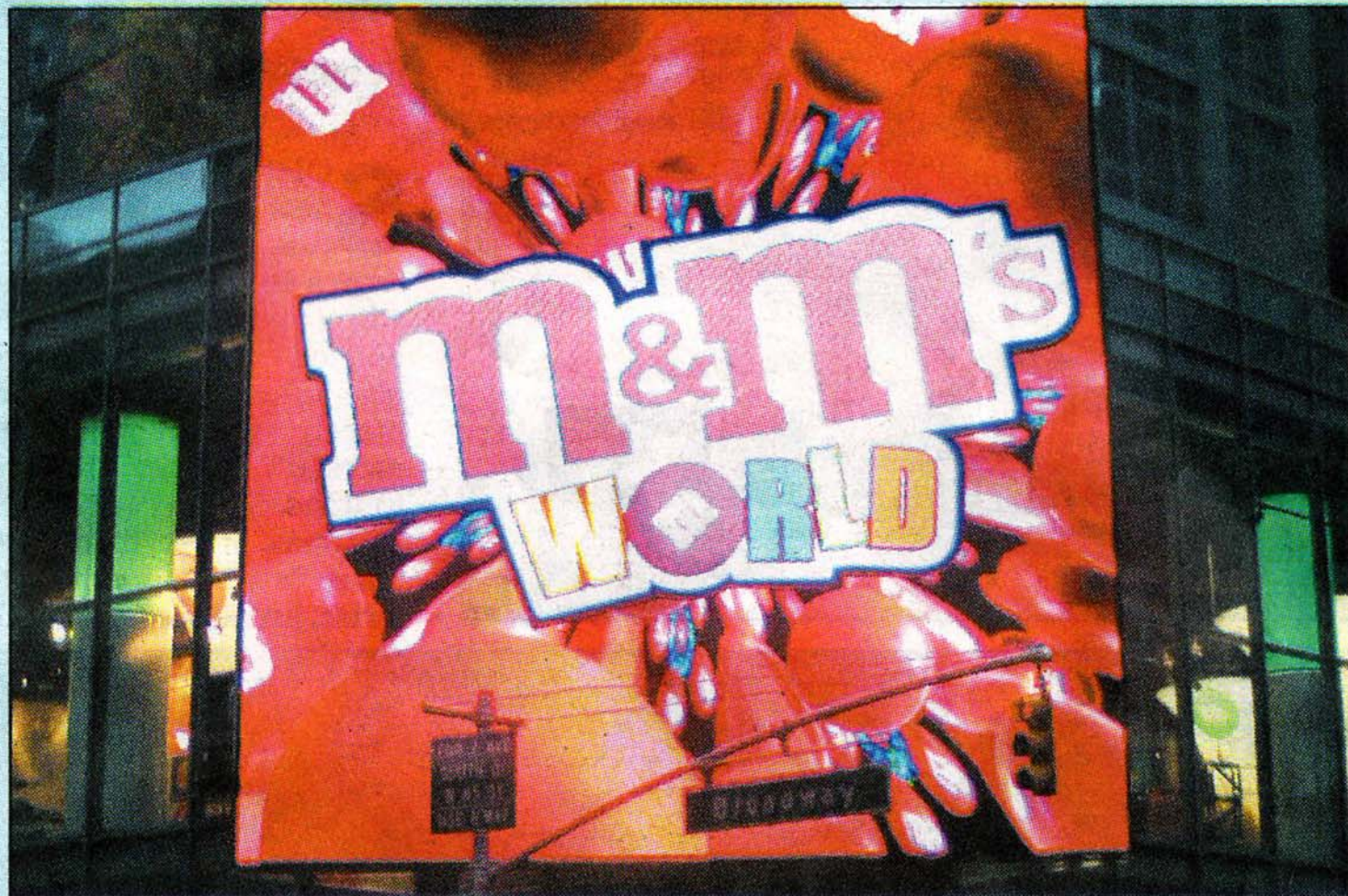




WELCOME TO CANDYLAND



Caitlin Thorne

THE M&M's World store at 1600 Broadway in Times Square will soon bring a rainbow of chocolate creations to the city that never sleeps.

Building owner Jeffrey Katz, CEO of Sherwood Equities, insists it's going to be the most amazing store in Times Square.

"It's a big store and will be pretty entertaining and is designed beautifully," he said. "When families take their kids to Times Square, it's going to be one of the

only things to do."

Kim Mogull, CEO of Mogull Realty, was the exclusive broker for Katz on this transaction.

The colorful design includes a grand 48th Street glass entrance that wraps both corners around Broadway and Seventh Avenue and the entire, equally window-walled second-story. That floor has 12,000 feet including a terrace, plus a 4,000-foot mezzanine. And lots and lots of signs.

Lois Weiss